

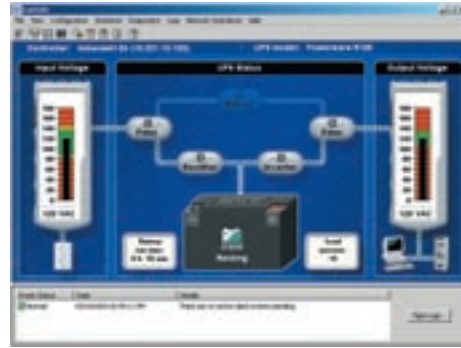
LanSafe™

Power Management Software

Features

- ▶ Sequential SafetyNet shutdown
- ▶ UPS group shutdown and control
- ▶ Work-in-progress saved throughout the network
- ▶ Stealth Mode Operation
- ▶ Cost Savings Calculator
- ▶ Event history summary
- ▶ Battery replacement warning
- ▶ Network & serial/USB connections
- ▶ Status@aGlance™
- ▶ Power on/off scheduling via calendar
- ▶ UPS load segment (receptacle) control
- ▶ Local/remote UPS power on/off
- ▶ Power-on delay
- ▶ PowerGraph
- ▶ Email alerts
- ▶ Network broadcast alerts
- ▶ Command execution on UPS alerts
- ▶ Personalized UPS alert notifications
- ▶ SNMP proxy agent-GET and SET support

NEW!
NEW!
NEW!
NEW!
NEW!



Running mission-critical applications and connecting widely-distributed nationwide and global operations are key strategic initiatives in today's business organizations. The ability to provide a steady, clean and undisturbed power flow to IT hardware in the network is paramount in keeping the systems available at all times.

However, the primary purpose of the IT infrastructure is to process, store and protect the information that is stored or en-route in the network. The data itself, and the ability to move it and process it at any given time, is priceless.

LanSafe power management software provides, in combination with an uninterruptible power system (UPS), the best possible protection for this valuable data. Whether at home or at work, LanSafe has you covered with its unique, proactive risk-management features.

Why Use LanSafe Software?

1. Prevent system crashes – when a power failure outlasts the UPS battery runtime, LanSafe automatically performs a graceful operating system shutdown.
2. Avoid data loss – LanSafe saves all work-in-progress.
3. Protect valuable applications – LanSafe protects from corruption by closing applications in an orderly fashion.
4. Stay informed – monitor and receive UPS alarms via network broadcasts, SNMP, email, pager or mobile phone.
5. Control your power – manage all UPSs on the network, check battery health, and create sequential shutdown scenarios.
6. Communicate with NMS - integrates UPSs into the SNMP network management system.

Powerware Recommends

Connectivity	UPS	System Solutions
<ul style="list-style-type: none"> > ConnectUPS-X Web/SNMP card 10/100 > ConnectUPS-BD Web/SNMP card 10/100 > ConnectUPS-MX > USB 	<ul style="list-style-type: none"> > 3 Series UPS > 5 Series UPS > 9 Series UPS 	<ul style="list-style-type: none"> > IBM Director management system with Powerware Extensions > SNMP-compliant network management system 

How would you like to View your UPS today?

LanSafe v. 5 offers three user-friendly, custom views for monitoring status, metering information and the internal workings of a UPS. Each view

provides a different level of available data, allowing various user groups to select the most compelling and useful view for their specific needs.

PowerScope View

The default view for single phase UPSs is 3-D PowerScope, which provides crisp, real-time animation of the power flow through the UPS components. Status and metering information is intu-

itively available at-a-glance in a graphical format. UPS component topology is automatically detected depending on the UPS model used.

Toolbar buttons
Quick-launch most common tasks

Input voltage meter

Battery runtime
Amount of time the UPS can operate on battery power

Active events log

LanSafe controller name, location and UPS model

Animated UPS topology display

Output voltage meter

Load percent
Percent of maximum output load the UPS supports the number increases when new devices are plugged into the UPS

Advanced Battery Management (ABM®) animated status indicator
Doubles battery life by charging only when necessary

NEW

ControlRoom View

The ControlRoom View is the default view for 3 phase UPSs. It provides a comprehensive listing of UPS metering data including inputs, outputs,

battery and UPS status information. Color-coded LED status indicators draw attention to UPS alarms.

Input status panel
Incoming power measurements from utility provider

LED status indicators
Color-coded LEDs draw attention to UPS alarms

Battery status panel
Keeps you informed on vital UPS battery-related information

Output Status Panel
Outgoing power measurements (what your UPS is feeding the protected devices)

Bypass/misc. panel
Displays important status information - stay informed of UPS temperature, fan and bypass status, etc.

View Logs
Check previously occurred alarms and status changes

History View

The LanSafe History View provides a 24x7x365 visual representation of the system event log in a calendar format. UPS events can easily be reviewed by year, at-a-glance. Color-coded dates display power events that have occurred in the system.

It has never been easier to review historical power problems: what happened, when it happened, how severe the event was, as well as how often it has annually reoccurred. The user may focus on any calendar date to obtain information on the event time, along with a description of the problem.

Go back in time

Select previous years with a calendar-format events summary

Double-click color-coded event dates for more info

Get detailed info of occurred power events

24x7x365 Power Event Calendar

Check a full year of power events at-a-glance

Date since data collected

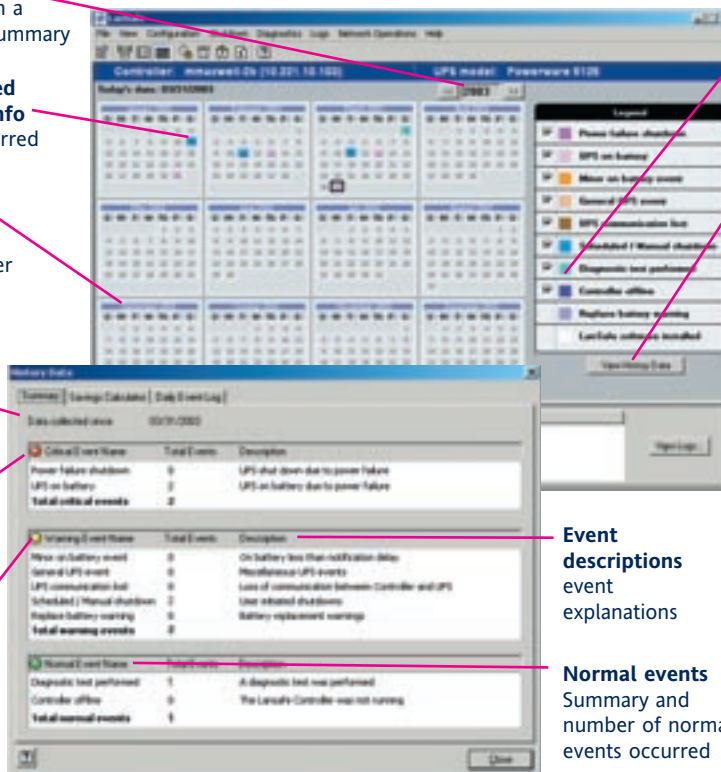
Data collection begins when LanSafe is installed

Critical events

Summary and number of critical events occurred

Warning events

Summary and number of warning events occurred



Select events to review

Review only those events that you are interested in

View history data summary

Actual number of normal, warning and critical power events occurred

Event descriptions event explanations

Normal events Summary and number of normal events occurred

Stealth Mode Operation - The invisible sentinel

The Powerware-exclusive Stealth Mode Operation feature enables LanSafe to run invisibly in the background without visual traces. This is particularly useful when integrating LanSafe into a point-of-sale (POS) system, automatic teller machine (ATM) or other environment in which user-awareness of LanSafe is not an option.

When enabled, the user will not see any UPS alarm popups on local ATM/POS computer monitors due to power problems. However, system administrators monitoring the ATM/POS network will still receive remote SNMP alarms to their network management systems.



Stealth Mode Operation

Removes visual traces, like the LanSafe system tray icon and popup alarms, but still notifies the system administrator "silently" via SNMP

NEW

Cost Savings Calculator - Discover the bottom line

The Cost Savings Calculator (patent pending) feature is used to determine the amount of money saved by the UPS due to prevented downtime. With this innovative new tool, LanSafe will do the math and generate reports using statistical data gathered from that specific UPS system, based on

the number of power failures and blackout duration. Calculations can easily be exported to spreadsheets, email and other applications. The user, according to their environment, enters the base costs for calculations.

One-time cost

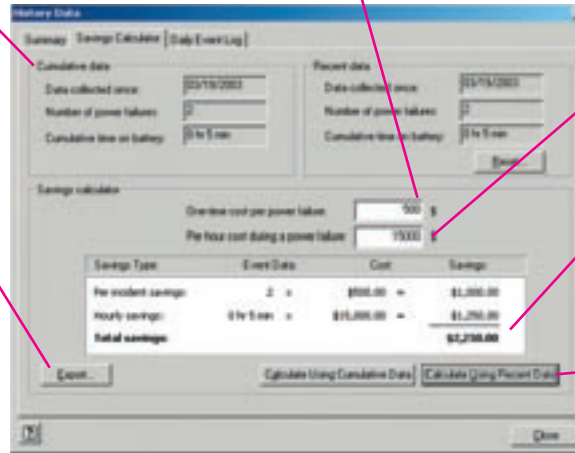
One-time cost per incident factors include data loss, customer transaction failure, and hardware and software infrastructure damage

Cumulative data

LanSafe keeps track of the total time the UPS has been on battery and the number of power failures

Export calculations

Paste cost savings calculations into your favorite reporting application



Per hour cost

Per hour cost factors include hourly rates for idle employees and missed transaction opportunities

The bottom line

How much money your UPS is saving by preventing costly downtime

Calculate data

Calculate either recent or cumulative savings

NEW

Set Preferences – Selected according to regional settings

LanSafe v. 5 incorporates Automatic Regional Settings Detection with local language support capabilities. Date, time, temperature and UPS receptacle graphics are automatically selected

according to the operating system's regional settings. Measurements are displayed around the globe in the formats users are familiar with. Any of the detected settings can be overridden manually.

Display system info in main views

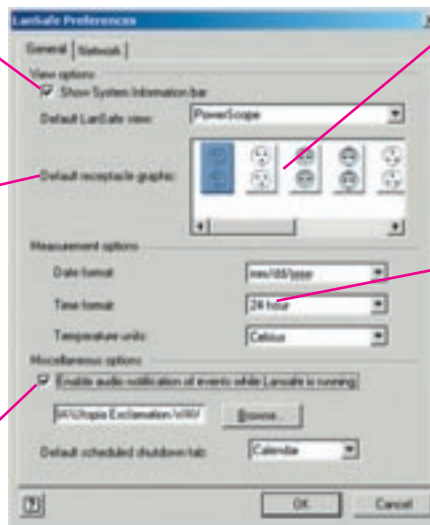
Enable/disable system info bar in main views

Choose default view

Select a favorite LanSafe view as the default: PowerScope, ControlRoom or History

Audible alarms

Enable/disable audio notifications



Select receptacles per region

Choose the receptacle displayed in the PowerScope View according to the region (auto-selected using system locale)

Change date, time, and temperature formats

Fahrenheit/Celsius temperature, 24/12 hour time and world date formats (auto-selected using system locale)

LanSafe v. 5 - The revolution of power management

The next generation of LanSafe power management software, version 5, introduces a number of revolutionary features to the power management arena.

Cost Savings Calculator

The patent pending Cost Savings Calculator can be used to determine the amount of money saved by the UPS solution due to prevented downtime.

Stealth Mode Operation

The exclusive Stealth Mode Operation feature enables LanSafe to run invisibly in the background without visual traces. This capability is particularly useful when integrating the application into a POS, ATM, or other environment where users should not be aware of LanSafe.

Three Optional Views

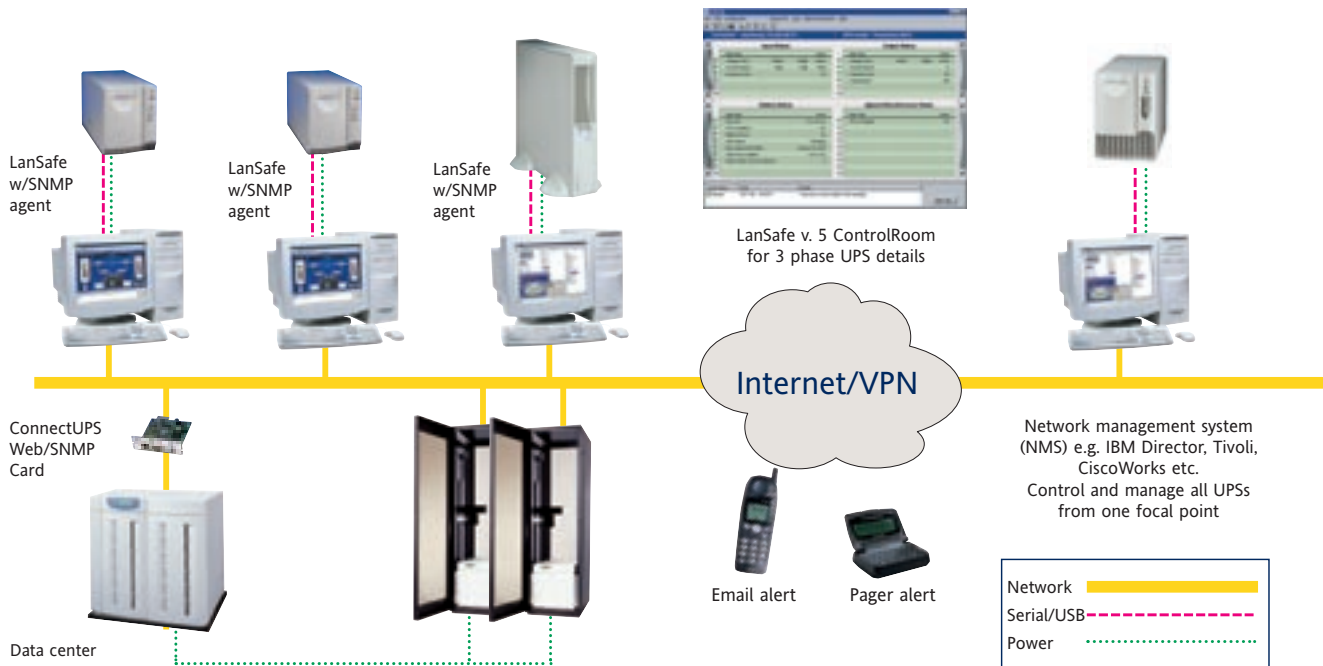
The 3-D PowerScope View, along with a new innovation, the ControlRoom View, take the guesswork out of understanding UPS metering

and status information. PowerScope is the default for viewing single phase UPSs while ControlRoom serves as the default for three phase UPSs. The third display format available is the History View, which allows users to review a year of UPS events at-a-glance in a calendar format. The favorite default view can be changed at any given time via the LanSafe preferences menu.

Automatic Regional Settings

LanSafe v. 5 incorporates Automatic Regional Settings Detection with local language support capabilities. Date, time, temperature and UPS receptacle graphics are automatically selected according to the operating system's regional settings. Measurements are displayed around the globe in formats users are familiar with.

With intuitive views and functions, a simplified installation procedure, and an array of powerful new features, comprehensive power management has never been easier.



The new LanSafe v. 5 provides comprehensive support for both Powerware single phase and three phase UPS products via serial, USB and network connectivity options.

System Requirements

LanSafe III	LanSafe v. 5
<ul style="list-style-type: none"> ▶ Supported Powerware UPS ▶ Single Serial Port Card (X-slot) ▶ Expansion Chassis with compatible option card ▶ USB Card (X-slot) ▶ Compatible operating system* <div style="margin-top: 10px;"> <p>Windows</p> <p>Windows 2000</p> <hr/> <p>Windows 95</p> <hr/> <p>Windows 98</p> <hr/> <p>Windows Me</p> <hr/> <p>Windows NT 4.0 (Intel)</p> <hr/> <p>Windows XP</p> <hr/> <p>UNIX</p> <p>AT&T Unix SVR4</p> <hr/> <p>Data General DG-UX</p> <hr/> <p>Compaq Tru64</p> <hr/> <p>Digital Unix</p> <hr/> <p>HP-UX</p> <hr/> <p>IBM AIX (RISC & PowerPC)</p> <hr/> <p>Interactive Unix</p> <hr/> <p>Red Hat Linux</p> <hr/> <p>SuSE Linux</p> <hr/> <p>SCO UNIX</p> <hr/> <p>SGI IRIX</p> <hr/> <p>Solaris</p> <hr/> <p>UnixWare</p> <hr/> <p>Other</p> <p>IBM OS/2</p> <hr/> <p>Novell NetWare</p> <hr/> </div> <p style="font-size: small; margin-top: 10px;">* Check www.powerware.com for most recent software updates and version support</p>	<ul style="list-style-type: none"> ▶ Supported Powerware UPS ▶ Single Serial Port Card (X-slot) ▶ Expansion Chassis with compatible option card ▶ USB Card (X-slot) ▶ Web/SNMP 10/100 Card (X-slot, Firmware v2.03 or higher required) ▶ ConnectUPS-M (Firmware v4.01 or higher required) ▶ Compatible operating system (check www.powerware.com software products Web pages for most recent software updates and versions)

Powerware

WORLDWIDE HEADQUARTERS
8609 Six Forks Road
Raleigh, NC 27615 U.S.A.
Toll Free: 1.800.356.5794
or 919.872.3020
www.powerware.com

CANADA
Ontario: 416.798.0112

SFT19FXA
Revision 06/03
Reprint 06/03

EUROPE/MIDDLE EAST/AFRICA
Denmark: 45.3677.7910
Finland: 358.9.452.661
France: 33.1.60.12.74.00
Germany: 49.7841.6660
Italy: 39.02.66.04.05.40
Norway: 47.23.03.65.50
Sweden: 46.8.598.940.00
United Kingdom: 44.1753.608.700

ASIA PACIFIC
Australia: 61.2.9878.5000
China: 86.10.852.99.889
Hong Kong: 852.2745.6682
India: 91.11.2649.941418
Japan: 813.3447.5251
New Zealand: 64.9.576.6842
Singapore: 65.895.8330

LATIN AMERICA
Argentina: 5411.4343.6323
Brazil: 55.11.3616.8500
México: 5255.9171.7777

