

GE  
Critical Power

# VCL Series UL UPS 120 V

800/1100/2000/3000 VA  
Uninterruptible Power Supply (UPS)



ATM  
24 HOUR BANKING



## Non-stop power

Today's 24/7 business world depends on 24/7 power availability and demands zero down time. GE's VCL Series of UPS ensures a continuous supply of clean, conditioned power to all critical loads, protecting against system interruption, data corruption and data loss.

- Voltage Independent technology with Automatic Voltage Regulation (AVR)
- Hot swappable batteries
- High efficiency
- Rack and/or tower assembly
- 2U rack height
- Graphic display
- Wide input voltage window
- USB and RS232 communication
- SNMP card option
- Data line surge protection
- Site wiring fault alert
- Multiple load outlets
- Free shutdown software

GE's VCL Series UL Uninterruptible Power Supply (UPS) is designed with Automatic Voltage Regulation (AVR) including buck/boost technology, suppressing or boosting the voltage from the utility to provide conditioned power to the attached load. Buck/boost minimizes the need to transfer to battery, maximizing the battery life. When the utility power fails, the battery steps in to continue the supply and allow enough time to finish the current process before gracefully initiating an automatic shutdown of the load.

## Key features

- Voltage Independent UPS with Automatic Voltage Regulation (AVR) technology
- Tower and/or rack configurable
- >95% efficiency
- 2U rack height across all ratings
- Graphic display
- Data line surge protection
- Hot swappable batteries
- RoHS and REACH compliant

## Applications

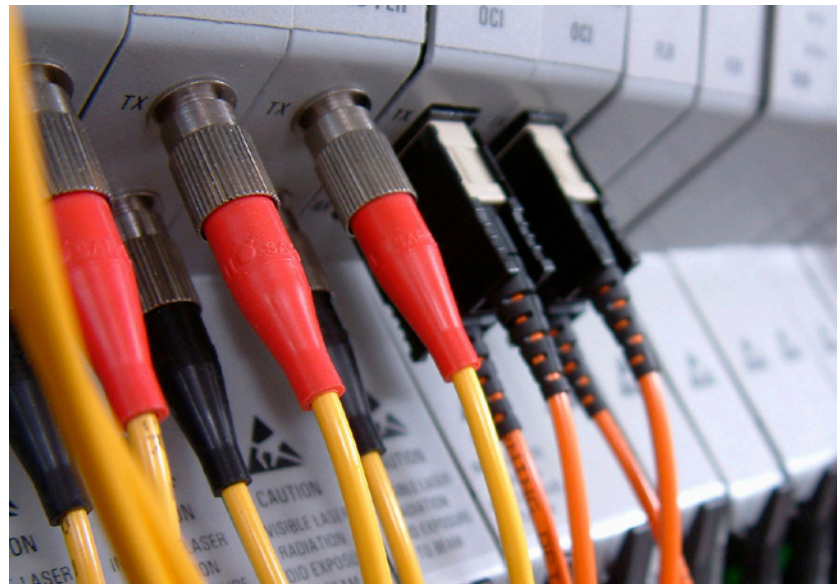
- PCs
- Servers
- Mid-sized networks
- ATM & Automated processes
- Voice/data networks
- CCTV & Security



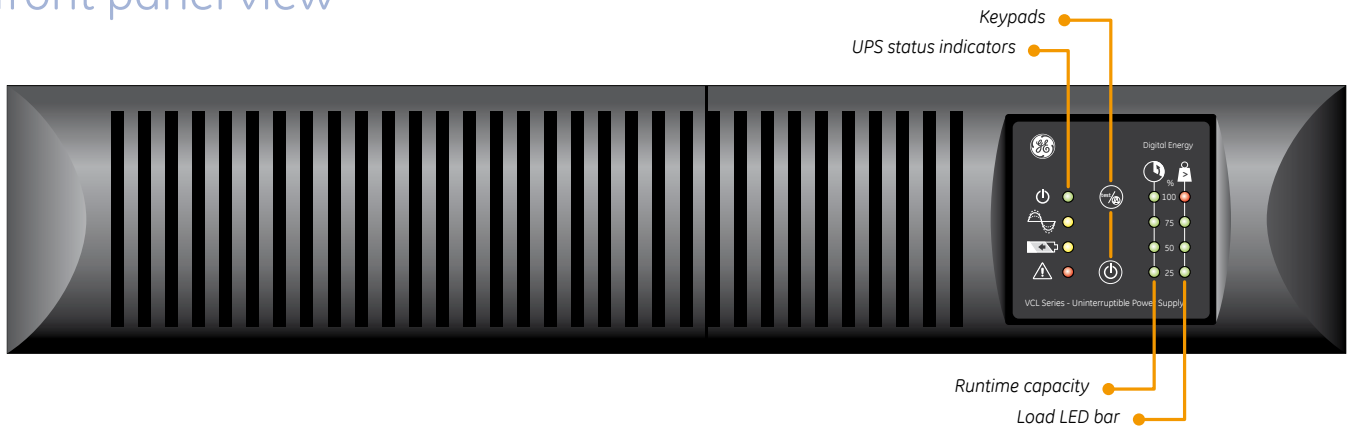
imagination at work

# features and benefits

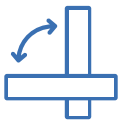
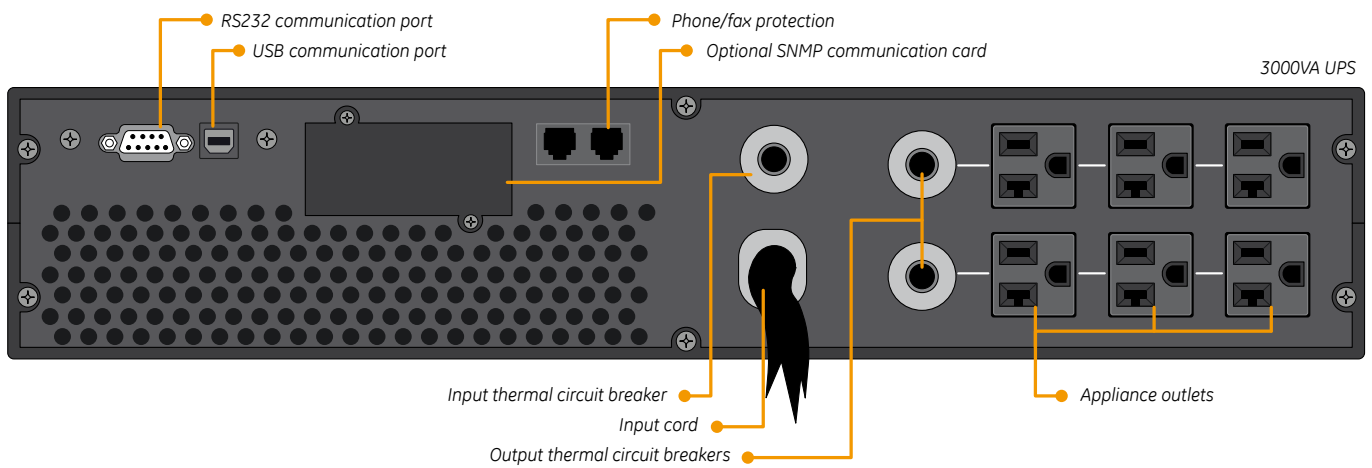
- **Line interactive technology with Automatic Voltage Regulation (AVR)**  
The VCL Series UL provides a high level of power protection at an efficient price point.
- **Hot swappable, user replaceable batteries**  
Batteries can be replaced quickly, safely and simply while the load remains connected, eliminating the need to power off a critical load for standard maintenance and with zero risk to the user.
- **High output power factor**  
Provides more actual power to the load and avoids the need to oversize the UPS.
- **Rack and/or tower format**  
Two formats available in a single cabinet. There is no need to select form factor when ordering, and allows for maximum site flexibility. As network demands change, the VCL Series UL can adapt with the changes.
- **2U height even to 3kVA**  
Frees rack space for more IT equipment. Small footprint for tower assembly, and parts for assembly delivered in packing box with the UPS.
- **Graphic display**  
For immediately visible operating parameters such as UPS, power load and battery status. Rotatable around 90 degrees to suit both tower and rackmount format.
- **Frequency 50/60Hz**  
Adjusts automatically depending on utility input; no user intervention required.
- **High efficiency**  
Efficiency at >95% reducing both energy and operational costs at site.
- **Surge protection**  
For data line (phone/modem) equipment, protecting against voltage spikes and surges on the data line.
- **Wide input voltage window**  
Minimizes battery use and extends the life of the battery. Allows the VCL Series UL to run undisturbed, when other UPS may have already switched to battery then shut down.
- **RS232 and USB communication as standard**  
For maximum flexibility on load connectivity.
- **SNMP card**  
Available as an option, supporting all major operating platforms. The UPS can be monitored and managed across a network, with web enabled SNMP configuration for full visibility of UPS operation from any location.
- **Multiple outlets**  
For all ratings; several pieces of equipment can be connected to the VCL Series UL without adding PDUs or extension strips.
- **Programmable battery test**  
Provides information on actual battery status, ensuring no surprises.
- **Site wiring fault warning**  
Delivers an immediate alert if the VCL Series UL detects a fault in the wiring of the connected wall outlet.
- **Free automatic shutdown software**  
The software is delivered with each UPS, allowing for a graceful, controlled shutdown of the connected load in the event of a lengthy mains failure.



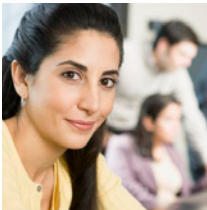
# front panel view



# rear panel view



The small, lightweight and easily transportable VCL Series UL can be installed as a tower or rackmounted UPS.



The VCL Series UL has quiet operation and can be placed directly beside the user for office use.



GE's comprehensive after sales and service support network provides full support to the comprehensive 2 year warranty on the VCL Series UL.

# Technical specifications

Model Rating VA/W	VCL800 UL 800/640	VCL1100 UL 1100/880	VCL2000 UL 1920/1600	VCL3000 UL 2880/2400
AC input voltage	120 Vac			
AC input voltage, window	90 - 150 Vac			
Frequency	50 / 60 Hz $\pm$ 5 Hz (auto-sensing)			
Power factor	0.8			
AC output voltage	120 Vac			
AC output voltage tolerance (until low battery)	$\pm$ 5%			
Output frequency	50 / 60 Hz $\pm$ 1% (selectable)			
Output frequency stability	< $\pm$ 0.1 Hz (battery operation)			
Output wave form	sine wave			
Crest factor	3:1			
Output THD	< 8% with linear load			
Input connection	NEMA 5-15P		NEMA 5-20P	NEMA L5-30P
Output connection	6 x NEMA 5-15R		6 x NEMA 5-20R	
Runtime at typical load (60%), minutes	8	8	9	9
Weight	30 Lbs (13.5 kg)	33 Lbs (15 kg)	55 Lbs (25 kg)	73 Lbs (33 kg)
Dimensions (hxxwxd)	3.5x17.3x16.0 inch (88x440x405 mm)		3.5x17.3x24.4 inch (88x440x620 mm)	
Ambient temperature	32 °F to 104 °F (0 °C to 40 °C)			
Sound at 1 meter	<55 dB(A), load and temperature dependent			
Maximum relative humidity	95% (non-condensing)			

Specifications subject to change without prior notice

## Who we are

### GE Critical Power

We support and serve customer power needs from the building infrastructure through to end devices, providing overall power to the system and at board level. A history of leading technology and decades of research and development enables GE's Critical Power business to provide specialized products, engineered solutions, and global professional services for customers in key markets and industries. Our goal is to provide you with reliable and efficient solutions that will help to reduce energy consumption as well as minimize the operating costs associated with supplying power to your applications.

### Our products

GE has been designing and developing UPS for more than 40 years. In addition to Uninterruptible Power Supplies, GE's Critical Power business includes power switching devices, DC energy systems and embedded power supplies such as board mounted power and front end rectifiers.

Our VCL Series UL is one of several GE UPS ranges designed to meet all power protection requirements, ranging from 400VA to over 4MVA across single phase and three phase. For more information, visit [www.gecriticalpower.com](http://www.gecriticalpower.com) or contact us.



### GE

#### Critical Power

Customer Service Support  
Toll-free: +1 800 637 1738  
US-based customer service  
Answered live 24/7  
[www.gecriticalpower.com](http://www.gecriticalpower.com)